

Technical Data Sheet



Available in a 78mm (double glazed) or 92mm deep (triple glazed) system

Configurations Available

Two Pane, one fixed one sliding / Two Pane, both sliding / Four Pane, bi parting at centre / Three Pane, one fixed two sliding / Four Pane, one fixed three sliding

Typical Glass Specification

78 Series 8mm toughened outer, 20mm argon gas filled cavity, 8mm toughened inner with low e coating
 92 Series 6mm toughened outer, 16mm argon gas filled cavity, 6mm toughened inner, 16mm argon gas filled cavity, 6mm toughened inner with low e coating

Additional Glass Options Solar Control Glass, Low Maintenance Coating, Anti Reflective Glass, Low Iron Glass, Tinted Glass, Sandblasted Glass, Screen Printed Glass, Coloured Glass.

Maximum Glass Thickness 78 series 36.5mm, 92 series 52mm
 Glass specifications must be determined upon advisement from IQ Glass

Frame

Solid timber frame with optional aluminium cladding on external face
 Vertical Profile 37mm
 Head and Side Profile fixed frame 45mm wide able to be hidden by building finish, sliding lead frame 37mm wide
 Base Detail 115.5mm tall base frame below finished floor level with proprietary drainage base block by IQ and patented sliding rail cover.

Timber Options

Oak available in Natural Effect / Light Walnut / Dark Walnut
 Fir available in White RAL 9010 / Loft Plisse / Loft Tango

Maximum Sizes 3000mm x 3000mm per sliding pane

Ironmongery

Handle Stainless Steel Carminati Thrust Lever handle with magnetic latch
 Sliding Rail Aluminium/Steel (steel if sliding panels weigh over 400kg each)
 Sliding Wheels Nylon/Stainless Steel (steel if sliding panels weigh over 400kg each)

Performance

Air Permeability Class 4 to EN 1026 – UNI EN 12207
 Water Tightness Class 9A to EN 1027 – UNI EN 12208
 Wind Resistance Class B3 to EN12211 – UNI EN 12210

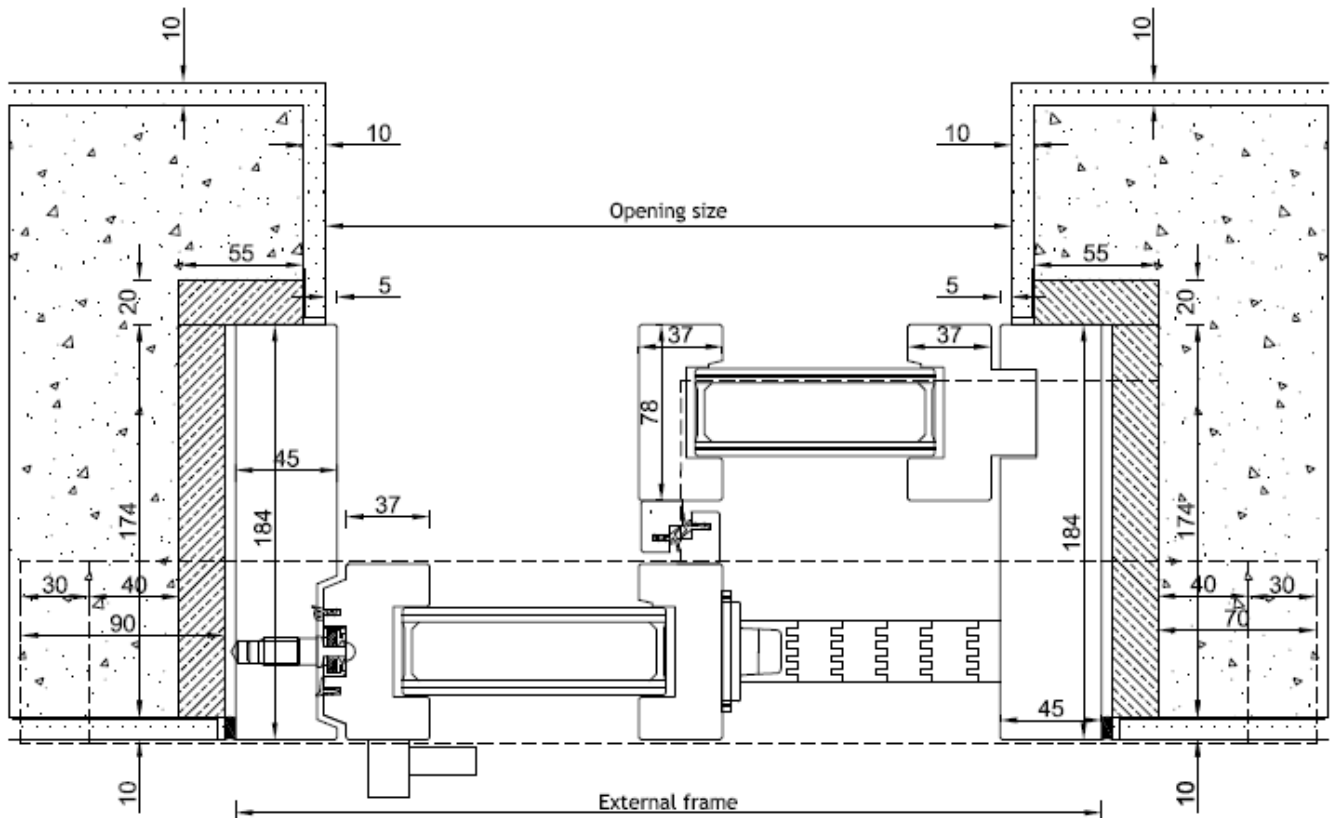
Thermal Performance (Uf Value)

78 Series Oak 1.5 W/m²K, Fir 1.2 W/m²K
 92 Series Oak 1.4 W/m²K, Fir 1.1 W/m²K
 Uw values must be calculated on an individual basis

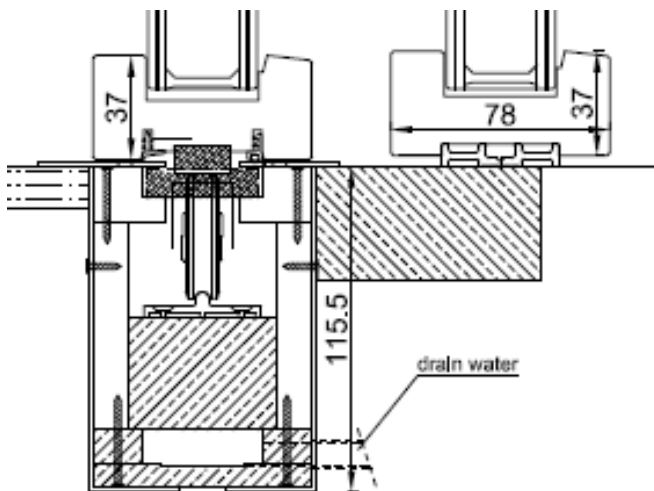
78 SERIES LIFT AND SLIDE DOOR

Two Track System, One Fixed One Sliding with exposed timber profile to the fixed leaf.

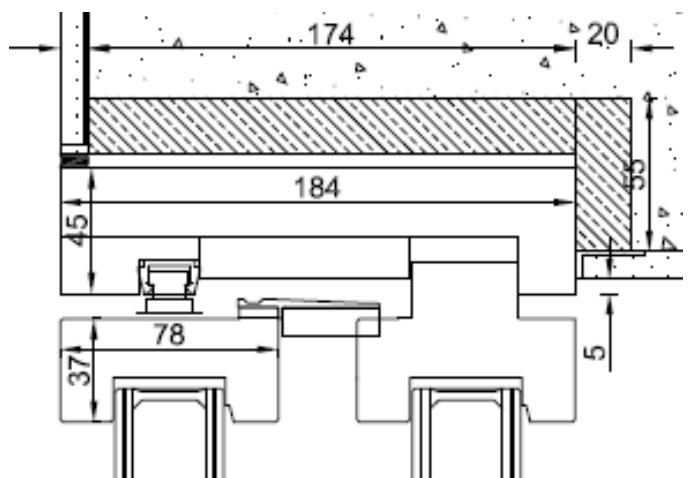
Horizontal Section



Flush Base Detail



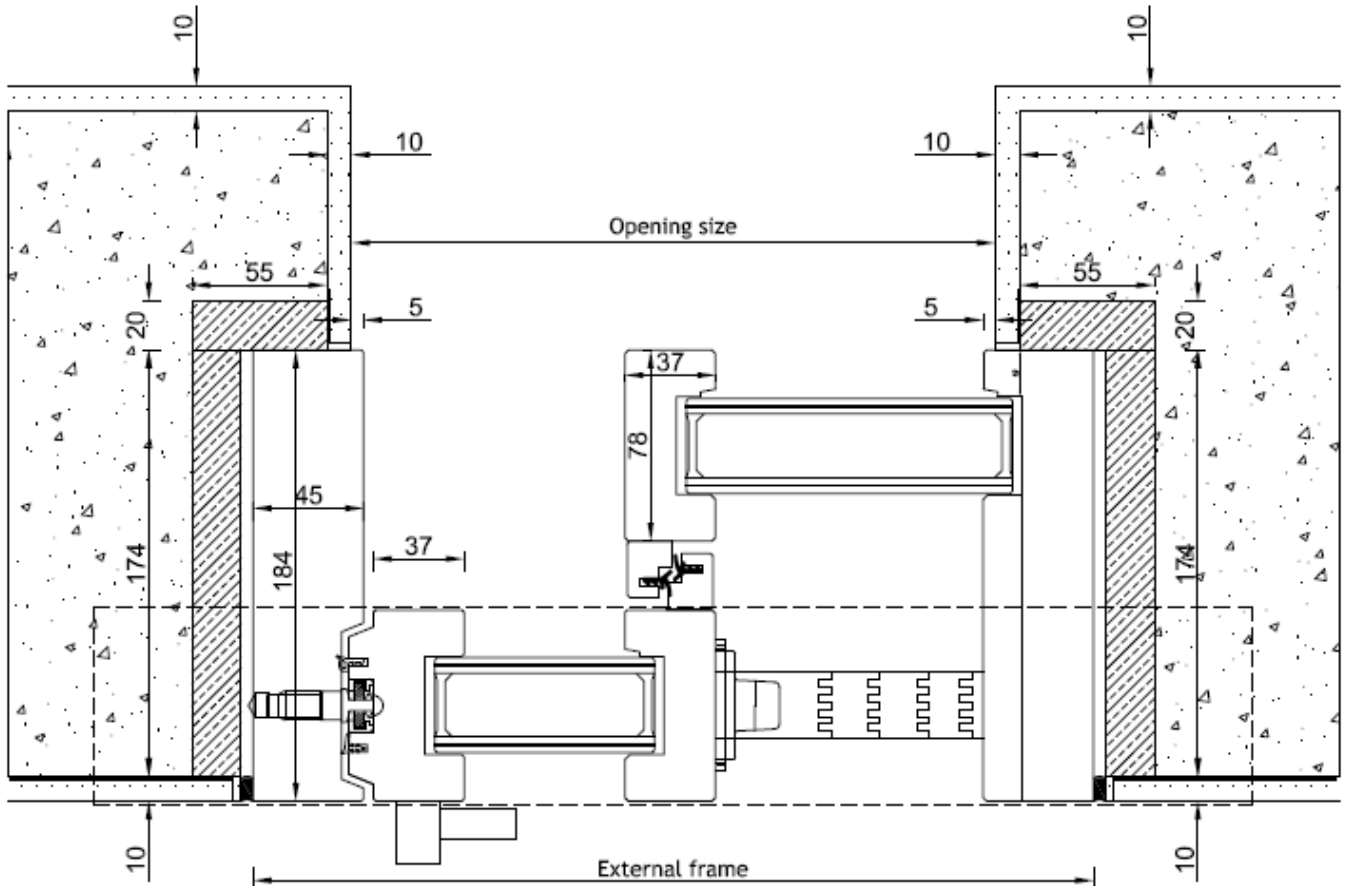
Head Connection



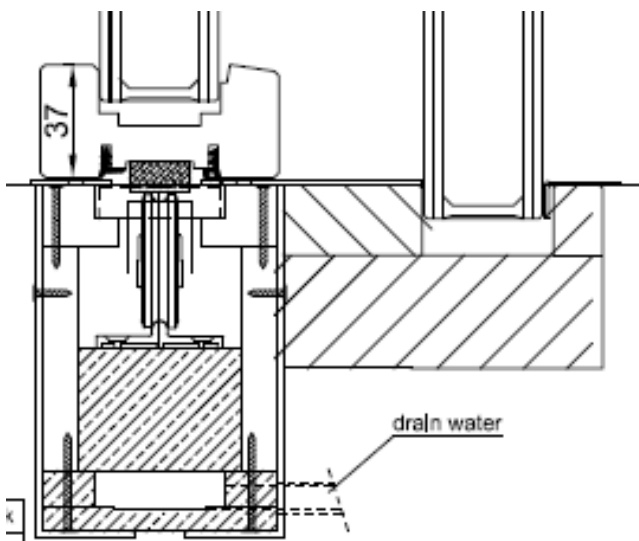
78 SERIES LIFT AND SLIDE DOOR

Two Track System, One Fixed One Sliding with frameless glass fixed leaf

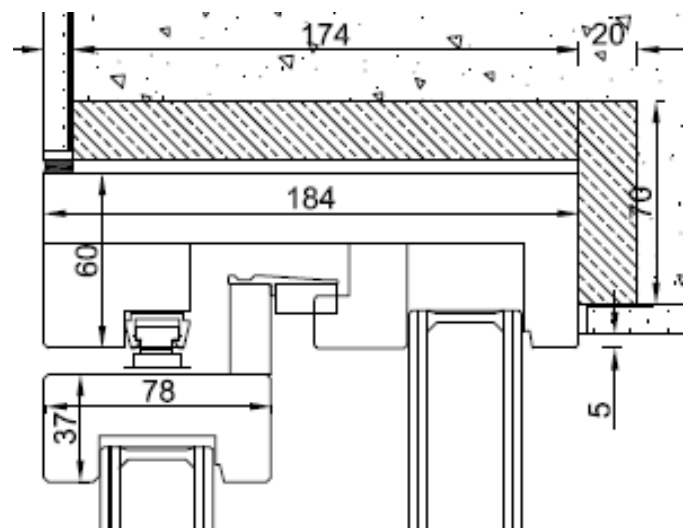
Horizontal Section



Flush Base Detail



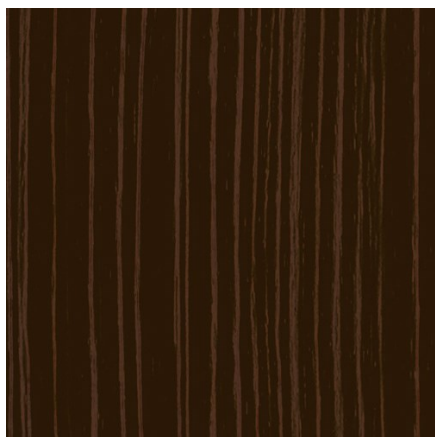
Head Connection



Frame Finishes

Fir Timber Finishes

Loft Tango



White RAL 9010



Loft Plisse



Oak Timber Finishes

Clear Walnut



Natural Effect



Dark Walnut



Optional Aluminium External Cladding any RAL colour

Detailed Images

Patented Sliding Rail Cover



The patented sliding cover track is carried with the sliding panel when the doors are opened, covering the sliding rail and creating a flat and flush internal to external totally unique floor finish.

New Lift and Slide Handle Design



The new stainless steel handle design sits within the 37mm vertical sightline of the timber sliding door frame for a sleeker finish. When closed the handle slots into the vertical fixing plate for an unobtrusive minimal handle design.