



Maximum Size

2200mm wide x 3000mm tall per door
Large sizes are available on request

Door Configurations

Inward opening as standard, extra cost for outward opening
Single Pivoting vertical pivot, adjustable and concealed
Coplanar with the wall
Available with side glazing

Door Designs

Available in a range of finishes and design including:

- Porcelain
- Lacquered Glass
- Timber
- Metallic

Frame

Aluminium covers the frame and the door profile. Seamless finish with no visible screws. Available in brushed steel as standard with a range of alternative options.

Locking

1. Cylinder external protection barrel with manganese rotating ring in Stainless Steel
2. Battery operated electronic motorised barrel locking
3. Mains connected electronic motorised barrel locking

Performance

Break In Resistance Class 3
Air Permeability Class 2-4 to EN12207
Water Resistance up to 5A to EN12208
Resistance to Wind Load C4/C5 to EN12210
Acoustic Insulation 38 dB
Thermal Performance Uw value 1.0-1.6 W/m²K

Handles

Internal

1. Ingressed Pull Handle
2. Hidden Ingressed Pull Handle

External

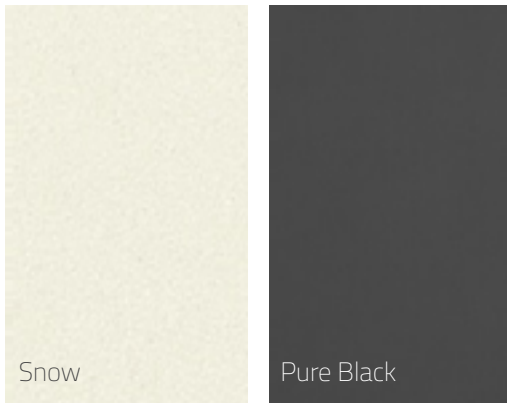
1. Short Bar Pull Handle
2. Long Bar Pull Handle

DOOR FINISHES

Porcelain

A highly durable finish suitable for both the internal and external face of the door. Is resistant to corrosion, water, frost and is easy to clean and maintain. The material is eco-friendly and recyclable and available in a wide array of designs, textures and col-

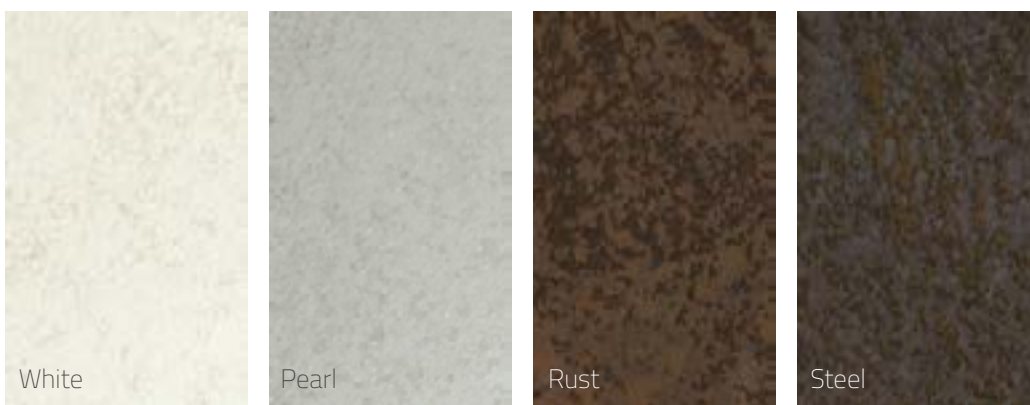
Collection



Calce



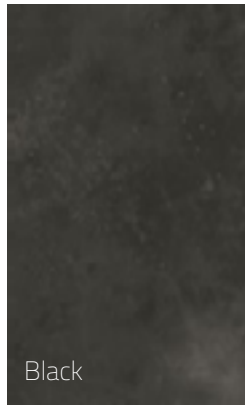
Cor-Ten



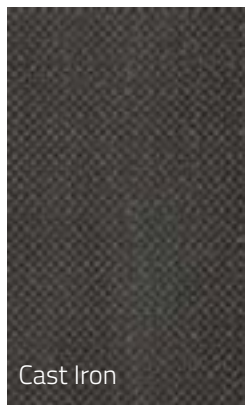
DOOR FINISHES

Porcelain

Oxide



Wire



Venice Wood



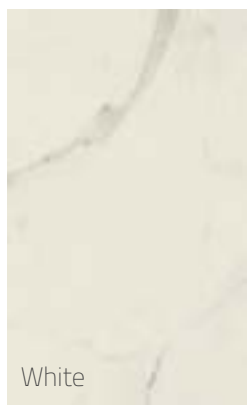
DOOR FINISHES

Porcelain

Savoy Stone



Stone

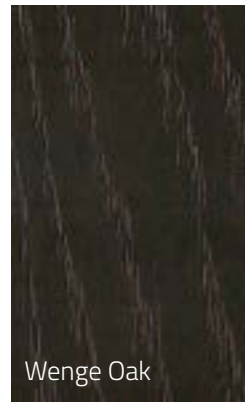


DOOR FINISHES

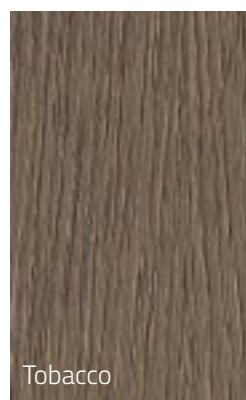
Timber

Our timber finishes are suitable for the internal face of the door or external faces of the door that are adequately sheltered from the elements. The timber is applied to the steel core in horizontal panels.

Natural Timber



Painted/Varnished Timber



DOOR FINISHES

Timber

Painted/Varnished Timber cont.



Sawn Oak

Created using special workmanship using a saw that cuts vertically across the grain. This enhances the texture and creates a worn design.



DOOR FINISHES

Timber

Matt Lacquered

Suitable for internal faces or external faces with adequate protection from exposure and the weather.



Open Pore Lacquered

Suitable for internal faces or external faces with adequate protection from exposure and the weather. Open Pore lacquered paint to highlight the grain.



DOOR FINISHES

Glass

Matt Glass

Suitable for internal faces or external faces with adequate protection from exposure and the weather.



Gloss Glass

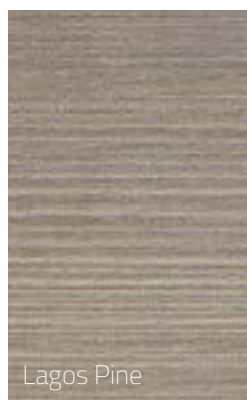
Suitable for internal faces or external faces with adequate protection from exposure and the weather.



DOOR FINISHES

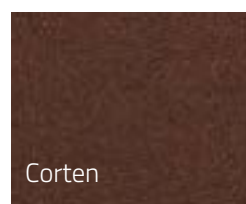
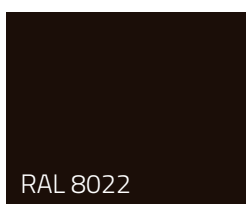
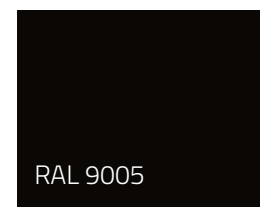
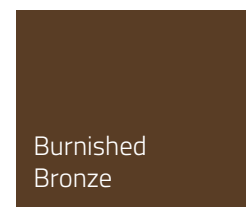
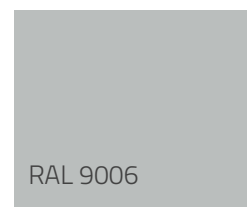
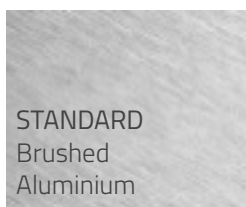
Materic

A specialist coating applied to melamine that is used to create the appearance of textured materials and fabrics on the door surface. Only suitable for the internal side of the door.



FRAME FINISHES

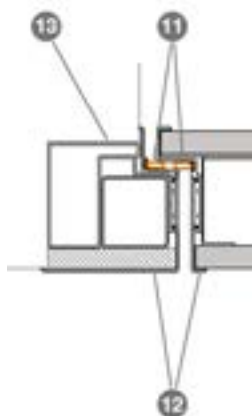
For the door frames and door edging including associated coverings of the doors.



DOOR CONSTRUCTION

Diagram Legend

1. Structure leaf tray in 15/10 zinc plated sheet metal
2. Horizontal reinforcing bars
3. Vertical omega
4. Cylinder lock
5. Closure points lock connection rods
6. Switchlock
7. Patented adjustable Pivot mechanism
8. Insulation
9. Coplanar handle
10. Covering sectors
11. Double tubular rubber sealing strip
12. Aluminium closing profiles
13. Closed hollow frame



Example Door Specification Text

15/10 electro-galvanized sheet steel leaf with 6 horizontal and 2 vertical reinforcing bars. 30/10 lock protection plate, aluminium closing profiles and frame covering profiles, perimeter frame sealing strip, internal insulation, standard supplied upper automation and standard supplied lower automation with draught excluder for Hole Opening (H.O.W.) values lower than 1500 mm with 38 dB acoustic insulation - beyond 1500 mm double draught excluder with non certified acoustic performance. Patented coplanar internal handle made of stainless steel with knob. External plate with embedded defender and 370 mm long handle made of stainless steel. Two fully adjustable pivot mechanisms (lower and upper), 3 side switchlocks (No. 2 on the lock side and No. 1 on the pivot side), cylinder lock with 4 dead bolts plus latch, high safety cylinder equipped with building site key, No. 4 owner's keys and No. 1 emergency key.



HANDLE OPTIONS



Internal Inset Pull Handle



Internal Pull Handle with Cover Flap



Internal Handle with Electronic Locking



External Short Handle. Available Horizontal.



External Long Handle. Available Horizontal or Vertical.

HANDLE FINISHES

For the handle there are three main options. The handle and surrounding profiles can be coated in almost any RAL colour. As well as this, there are liquid metal paints available and the surround frames can be anodized upon request.



Metal Paints



Metal Paints in dark bronze and light bronze

LOCKING OPTIONS

The Apertio Solid Door is a high security entrance door and is available with a range of locking control options to suit the project. Full integration into Smart Technology and Building Management Systems is also possible.



Electronic locking can be powered via battery or fully integrated into the mains electricity supply.



Mechanical Key Locking

External locking is operated via a manual key lock as standard.

Electronic locking is available operated via a card reader OR keypad/card reader.

The keypad can be locked and unlocked via a pin OR card.



External card reader lock



External keypad/card reader external lock

Internally the doors can be locked and unlocked via:

- a button
- electronically
- a cylinder knob

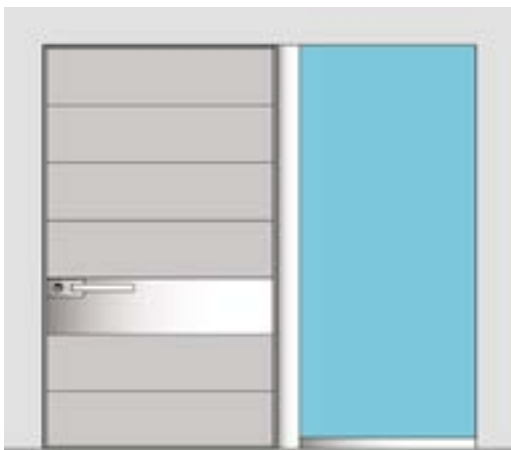
DOOR CONFIGURATIONS



Single Door



Single Door with Steel Band



Single Door with Glass Panel to Right



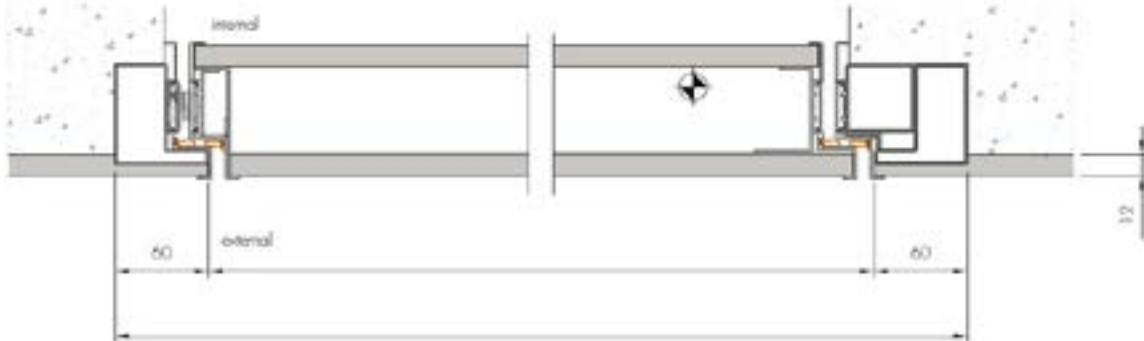
Single Door with Glass Panel to Left



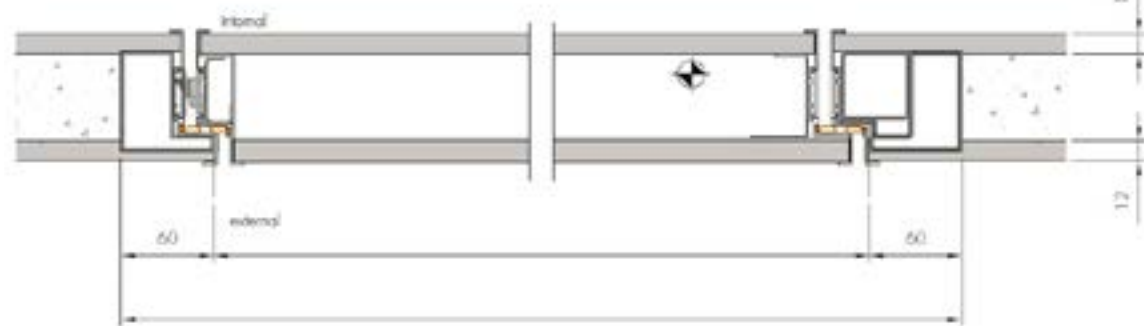
Single Door with Glass Panels Either Side

DOOR FITTING OPTIONS

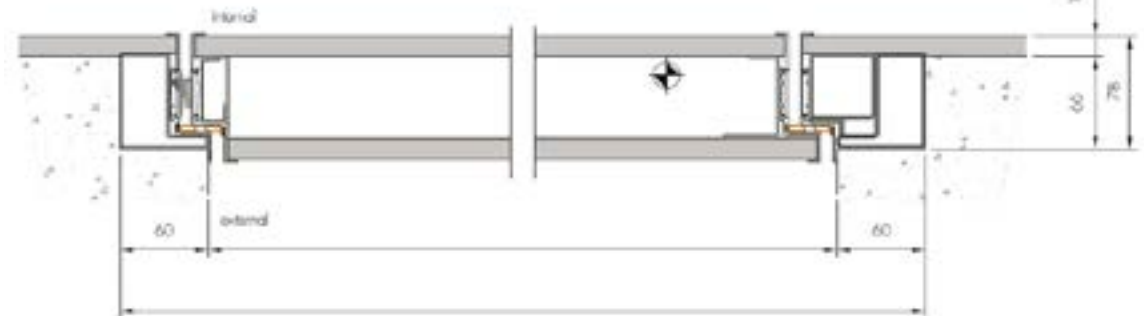
Flush with External Wall



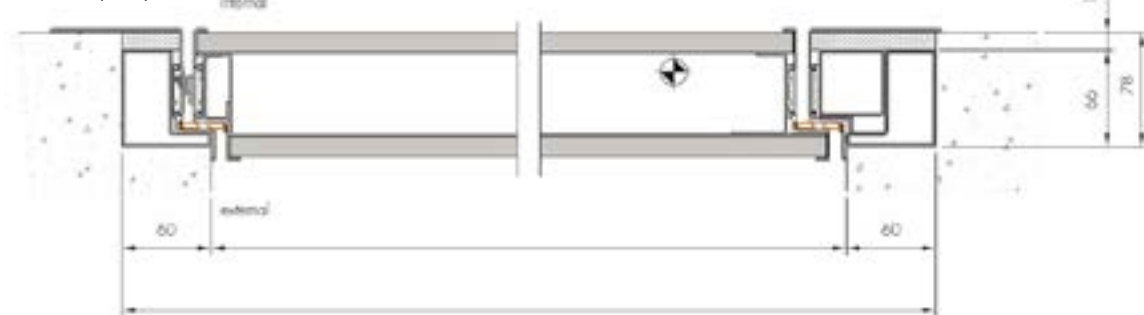
Flush with Internal and External Wall



Flush with Internal Wall



Internally Coplanar



SEE IT IN THE SHOWROOM

The Apertio Solid Entrance Door is available to view in person at the Sky House Design Centre in Amersham. The large pivoting front door is used as the main entrance to the Sky House building so showcases the product in a true built environment under constant daily use.



Finishes on Show

The large door on show at Sky House is finished with the **Porcelain Oxide Bruno** on the external face with a slatted internal face of **Wenge Oak**. All surrounding framing and handle mounts are PPC black.

As well as this large built sample we have the full range of finishing samples available to view at the showroom to help you make your specification choices.

Come and Visit

We recommend that you make an appointment to visit the Sky House showroom to ensure there is a suitably technical member of the team to assist you. Sky House is open for appointments Monday to Friday, 8.30am to 5.30pm and Saturday 9am to 3pm. Appointments outside of normal opening times may be possible for quoted projects.



HOW TO SPECIFY AN IQ INGRESSO DOOR

IQ Ingresso Doors are the first choice for architects and designers all over the UK. If you would like to specify an IQ Ingresso Door on your project just speak to the team at IQ who would be happy to assist.

Speak to the team at IQ

The team at IQ are the experts in our door solutions. If you are considering using an Ingresso product on your project speak to the team at IQ who will be able to advise you on the best solution for your intended design, ensure that all specification criteria are met and advise you on any feasibility areas of the installation you may not have considered.

Get a Quotation

We advise our customers to get a quotation for the door installation from IQ. This allows us all to ensure that the preferred product and design is within budget. If it is not we can help you adjust the specification to reach all performance, design and budgetary requirements.

Add us to your NBS Specification

To assist you in specification we have created individual NBS Specification sheets for each IQ Ingresso product. These easy to navigate documents contain all the vital information needed for specification. They are available for your to complete on your own alternatively ask your sales representative at IQ to complete this on your behalf.

Place the Order

When ready you (or your client or the builder) can then place the order for your IQ Ingresso door with us. A full in house handover will take place and your project will be passed to the contracts and design team. Once your project deposit is placed we will then undertake full design drawings for the IQ Ingresso installation. Please allow at least 20 working days for the design process.

The project will be appointed a dedicated contracts manager who will oversee the installation process. The estimated lead time for IQ Ingresso products is 6 to 8 weeks but may be more for specialist installations. This will be confirmed on order.

Any Questions?

Contact the team at IQ who will be happy to help.

DOWNLOADS AND OTHER USEFUL INFORMATION

The Apertio Solid Product Page

See more product images, technical information and links to further reading at the Apertio Solid Entrance Door product page on the IQ website.

[The Apertio Solid Product Page](#)

The Belgravia Door

The Belgravia Door is a great entrance door option for buildings in traditional or conservation areas. The external skin of the door can be created bespoke in keeping with the external design required. Internally the door can be finished in a completely different style, more in keeping with a modern interior.

[The Belgravia Product Page](#)